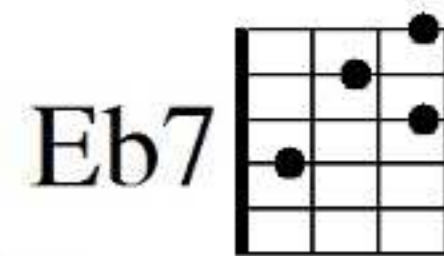
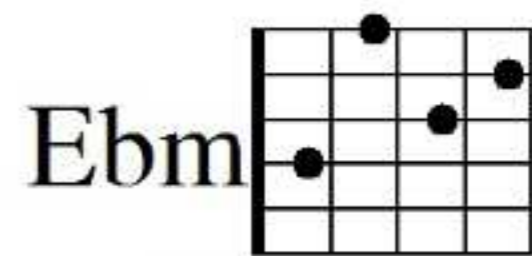
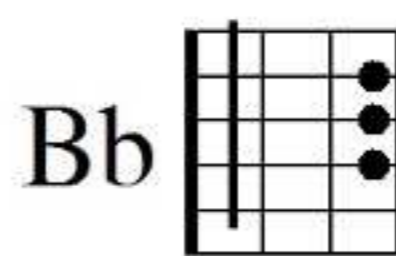
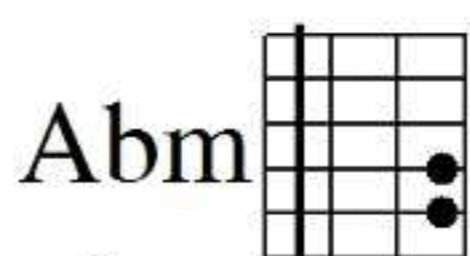
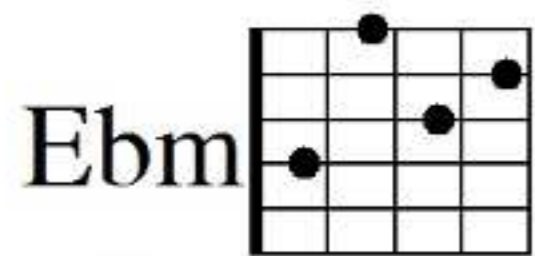


Kadenzfolge Moll

The image displays a sequence of 20 chords for guitar, arranged in five rows of four. Each chord is accompanied by a fretboard diagram and a musical staff showing its placement on the guitar. The chords are: Am, Dm, E, Am, A7, Dm, Gm, A, Dm, D7, Gm, Cm, D, Gm, G7, Cm, Fm, G, Cm, C7, Fm, Bbm, C, Fm, F7, Bbm, Ebm, F, Bbm, Bb7.

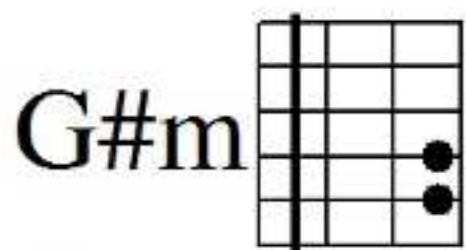
Kadenzfolge Moll 2

IV

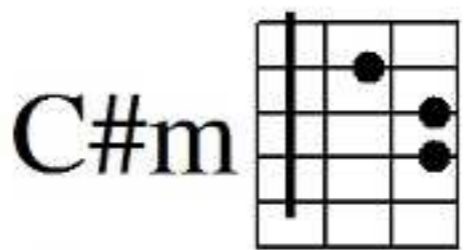


Musical staff with treble clef, key signature of one flat, and common time signature. The staff contains a melodic line and a bass line. The word "oder" is written above the staff, and "D#7" is written below it.

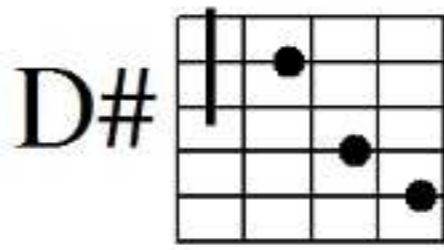
IV



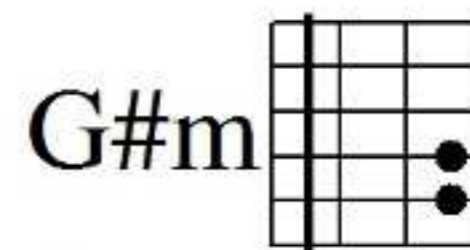
IV



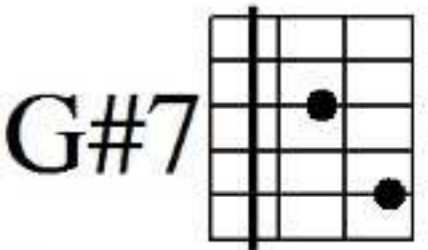
III



IV

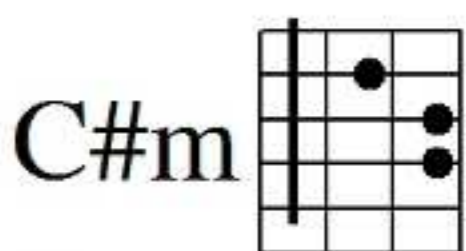


IV

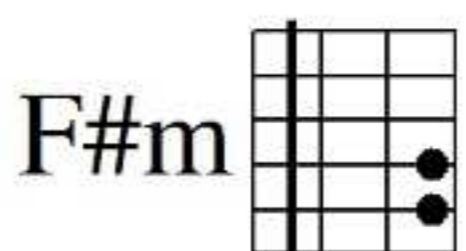


Musical staff with treble clef, key signature of two sharps, and common time signature. The staff contains a melodic line and a bass line.

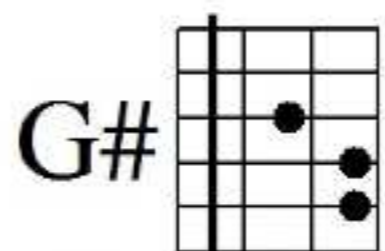
IV



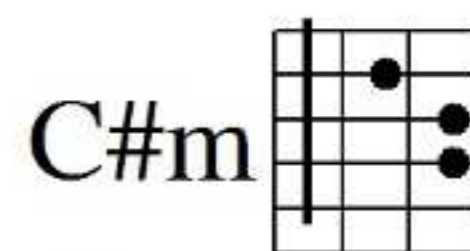
II



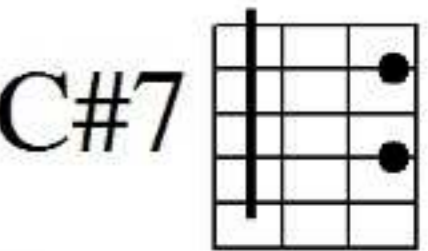
IV



IV

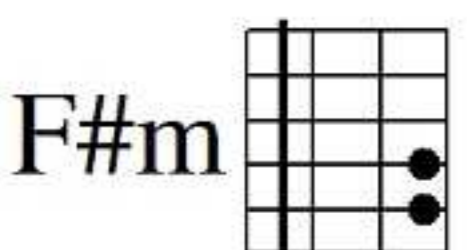


IV

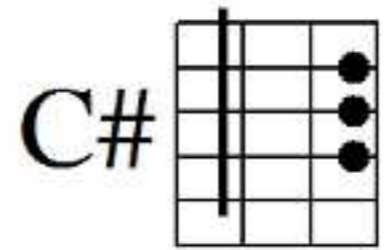


Musical staff with treble clef, key signature of two sharps, and common time signature. The staff contains a melodic line and a bass line.

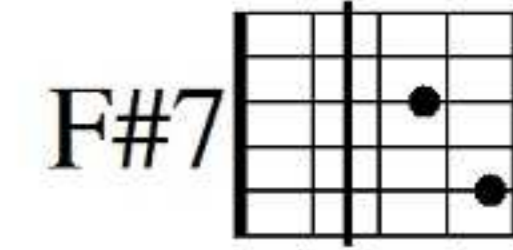
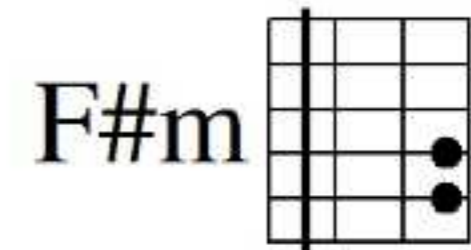
II



IV

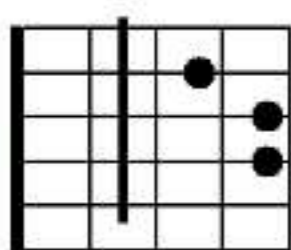


II

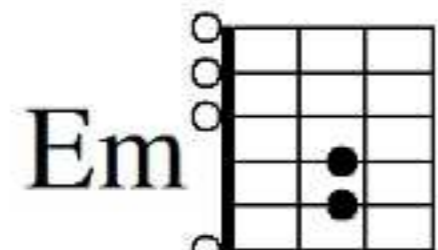


Musical staff with treble clef, key signature of two sharps, and common time signature. The staff contains a melodic line and a bass line.

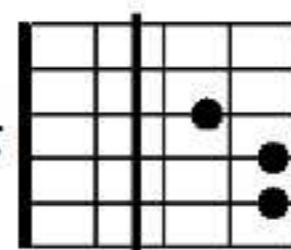
Bm



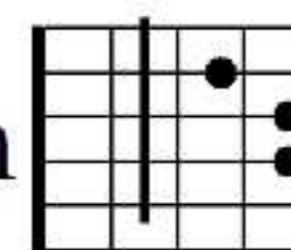
Em



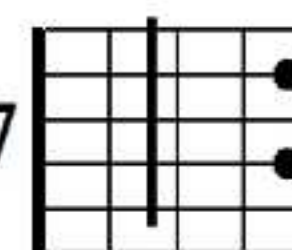
F#



Bm

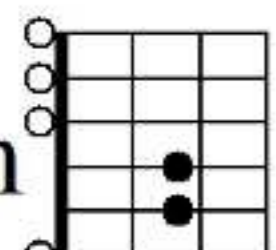


B7

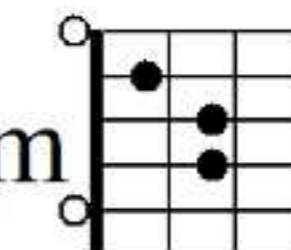


Musical staff with treble clef, key signature of two sharps, and common time signature. The staff contains a melodic line and a bass line.

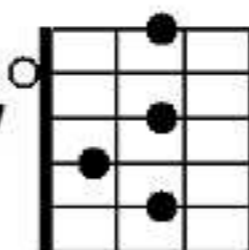
Em



Am



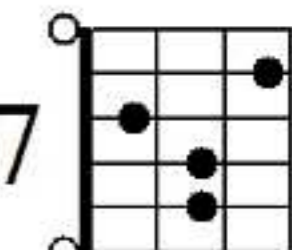
B7



Em



E7



Musical staff with treble clef, key signature of two sharps, and common time signature. The staff contains a melodic line and a bass line.